



JDS7

Label design software

USER MANUAL

Important Notes

Copyright

The present document and the described software therein belong to the company Allen Coding. All rights remain reserved. Reproduction of this document, in full or in part, requires prior explicit and written approval of the company Allen Coding.

©Copyright 2013 Allen Coding GmbH, all rights reserved.

Disclaimer

The company Allen Coding undertakes all measures to ensure that the published document is up to date at the time of publication. However no guarantee may be given that the document is error-free. Allen Coding does not accept liability for possible damages that may have been caused by faulty information in this document. The company Allen Coding reserves the right to change the present document at any time without prior notice and to alter its content in regards to continuous product improvement.

Contact Information



Germany

Allen Coding GmbH
Friedrich-Bergius-Ring 30
D-97076 Würzburg
Tel.: +49 931 250 76 - 0
Fax +49 931 250 76 – 50
Email: info@allencoding.com

United Kingdom

Allen Coding Systems
Unit 9, Gateway 1000,
Whittle Way, Arlington Business Park,
Stevenage, Hertfordshire SG1 2FP
Tel.: +44 1438 347 770
Fax +44 1438 347 771
Email: info@allencoding.co.uk

Spain

Allen Coding Systems
Carretera del Mig, 83-87
08940 Cornellà de Llobregat,
Barcelona
Tel.: +34 93 470 56 00
Fax +34 93 473 56 21
Email: informacion@allencoding.com

Website: www.AllenCoding.com

Table of Contents

Important Notes.....	3
Table of Contents	4
1 Introduction	5
2 Installation	6
3 Select printer	8
4 Files.....	10
5 Fonts	11
6 Fields.....	12
6.1 Text	12
6.1.1 Fixed text.....	12
6.1.2 Variable field	12
6.1.3 Multiple field.....	12
6.1.4 RS field	12
6.1.5 Counter	13
6.1.6 Audit Code.....	13
6.1.7 Common variable	13
6.1.8 Shift code	14
6.2 Barcode	14
6.3 Graphic.....	15
6.4 Line and Frame.....	15
6.5 Date.....	16
6.6 Time	17
7 Multiple fields	18
8 Setup.....	19
8.1 Printer Setup	19
8.2 Common variables and other printer parameters	20
8.3 Download fonts.....	20
8.4 Online Utilities.....	21
9 Print	22

1 Introduction



XLU printers have a powerful software tool, **JDS7**, which lets you design labels for your printer very quickly and easily through a true WYSIWYG user interface.

JDS7 was developed in the **Windows** environment, full compatible with all Windows versions, included Windows7 (32 and 64 bits), and provides all the tools needed to create, edit and print labels on XLU printers.

Moreover, **JDS7** lets you simple management of the printer status and setup parameters.

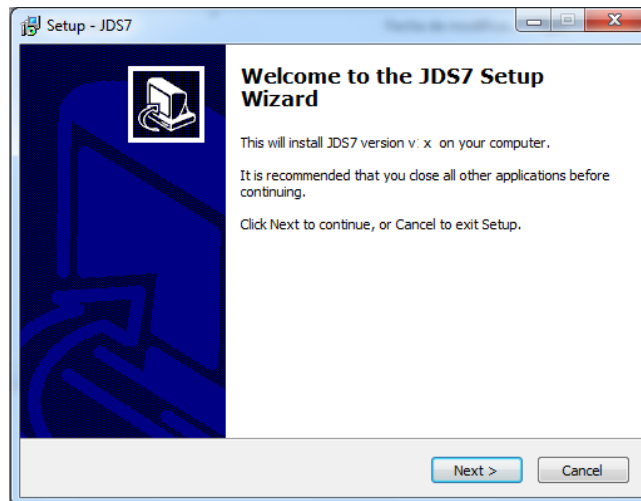
JDS7 has a context sensitive integrated help.



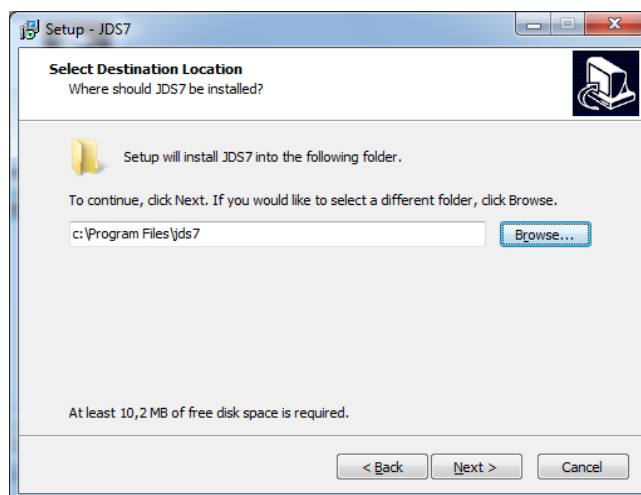
2 Installation

This chapter describes how to install JDS7 into your computer.

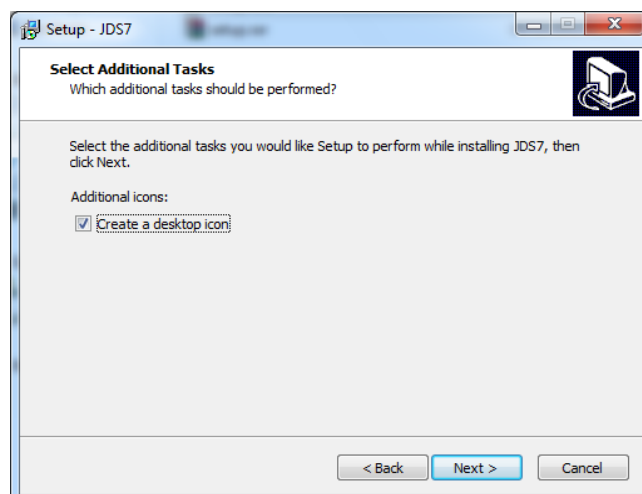
Insert the installation disk into your computer's CD-Rom drive.



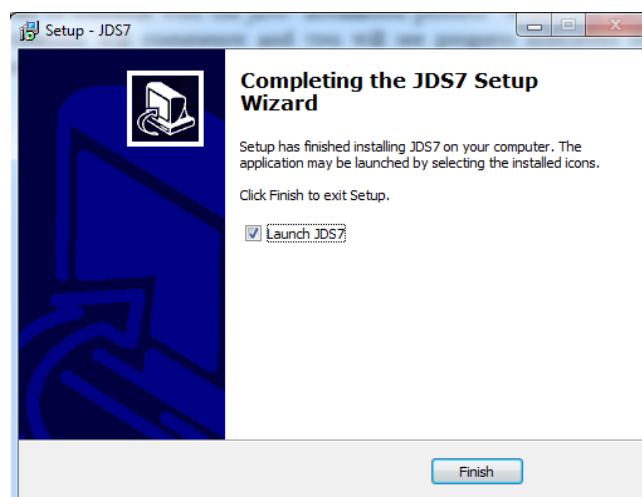
The installation program recommends **c:\Program Files\jds7** as the directory to install the necessary files. You may accept this recommendation or specify a different directory with the **Browse** button if desired. Click on **Next** when you are ready to continue. The Program Folders option window will appear.



You can place a shortcut into the desktop by checking the box that appears in this window.



You may use the **Back** key to return to an earlier window and make changes or click on **Next** to continue with the JDS7 installation process. When you click **Next** the actual installation will commence and you will see progress indicators on your computer screen. Once the installation is complete you will see the following screen.



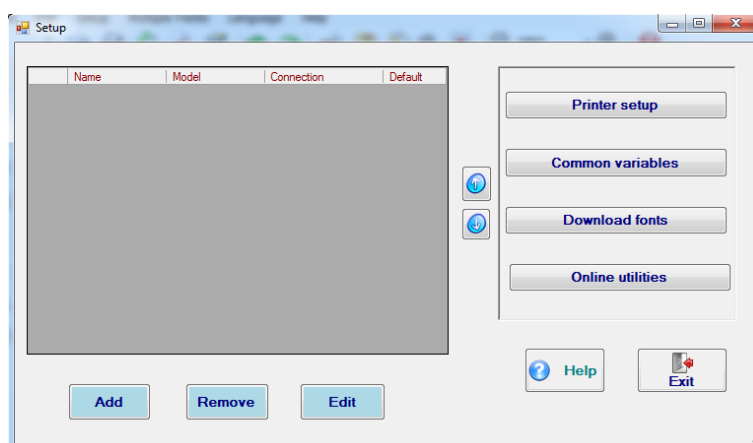
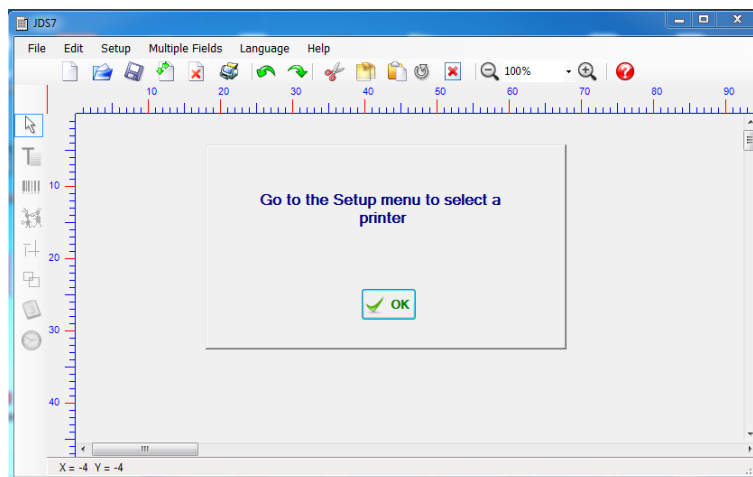
To run JDS7



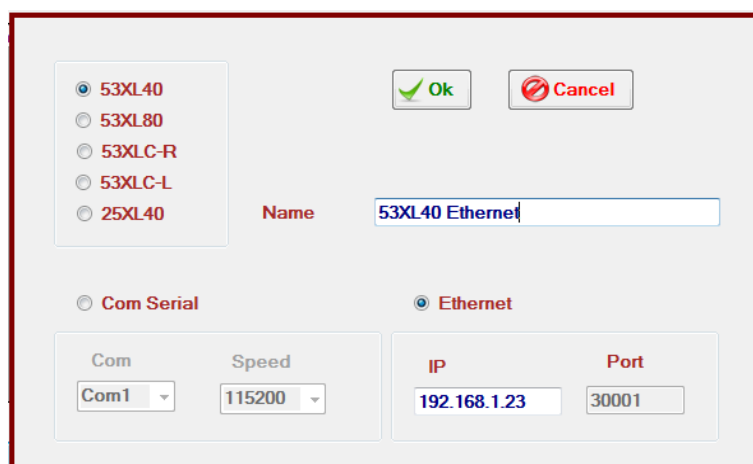
If you chose this option, an icon has been placed on your Windows Desktop for the JDS7 program. Double-click this icon to start JDS7. If not, click on Start>Programs>Jds7>Jds7 to run the program.

3 Select printer

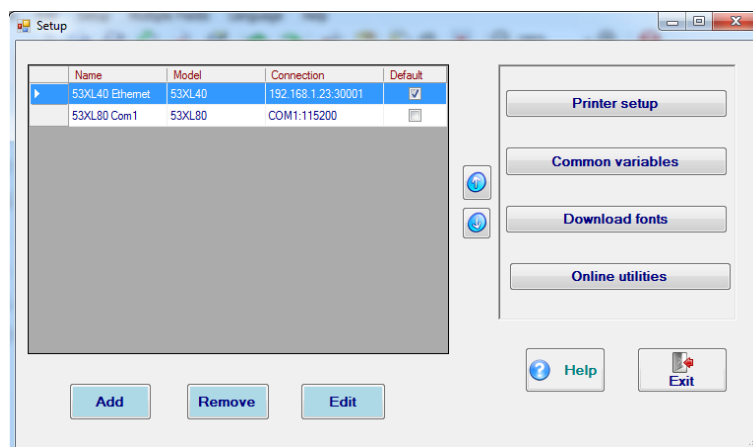
Once JDS7 is open for the first time, the next step is setup a printer to work with.



Select Add and choose the printer model and the way it is going to communicate with the computer.



More printers can be added. In such case the user could define which of them the “default printer” is.



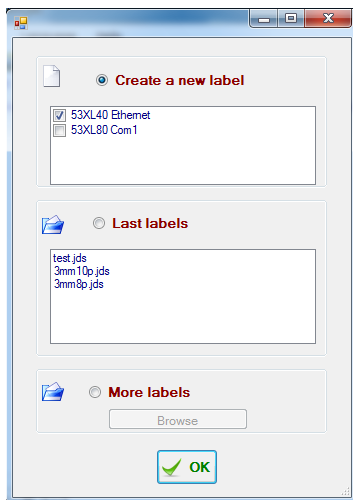
4 Files

When a label is designed and saved, JDS7 create two files with extensions

jds
imp

The .jds file is only read by JDS7 and has all the fields information.

The .imp file has the same information but in a way that the printer could "understand". This is the file that we will use for download labels into the printer through the USB port. They must be copied into the IMPPRX folder in the pen drive device.



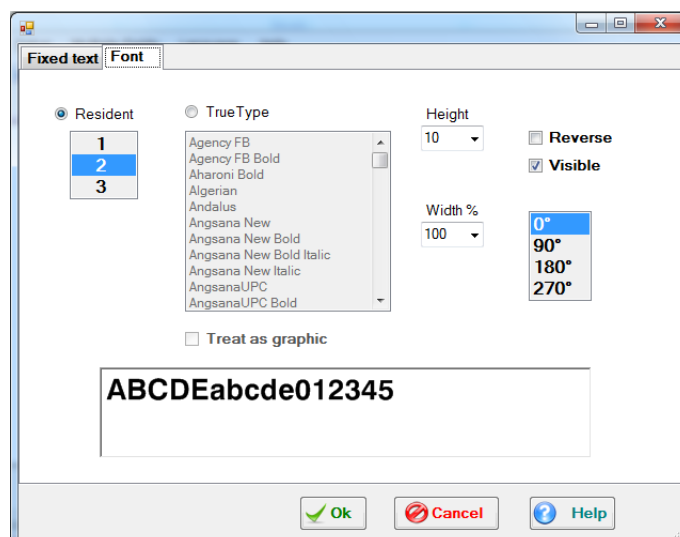
JDS7 needs to know for what printer you are going to design a label in order to setup the label parameters properly. In some cases, a label designed for a specific printer could be printed in another one; the user can choose this option.

Label files created with JDS7, whose extensions are **.jds**, are not compatible with files created with JDS4, however there is the option **File > Import label from JDS4** that allow the user to read a label created with JDS4 (**.frm** file) and save it with the new **.jds** extension.

5 Fonts

The tab Font is available whenever the user choose fields like text, date, time, variable fields, counters, shiftcode and audit code.

There are 3 resident fonts. Fonts 2 and 3 are WGL4 fonts and have all the European characters. Font1 is not this kind and we keep for compatibility with JDS4 labels.



In addition to the resident fonts, the user could choose any Windows installed TrueType font. All Unicode characters could be printed using Truetype fonts, Asian included. XLU printers have about 23Mb of free space to keep downloadable fonts.

In these cases, be sure that the font is downloaded into the printer. (See section 8.3)



NOTE

It is the responsibility of the end users to ensure that they comply with the font licensing requirements provided by the owners of such fonts. Any fonts stored in memory of LTU printers may require licensing from the font vendor.

Another option is to use a Truetype font and treat the text written with it as a graphic. This applies for fixed text into the label, not variable.

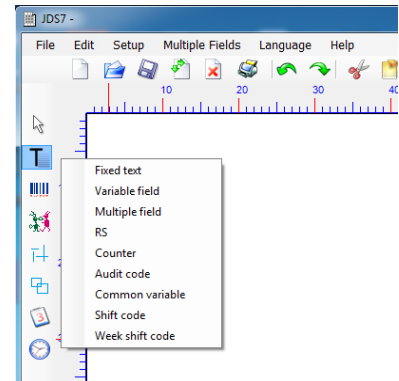
6 Fields

This chapter covers the different type of fields available for use when designing a label and their options.

6.1 Text

6.1.1 Fixed text

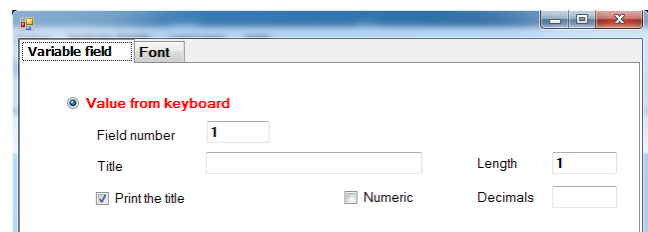
This field is used to define non-variable text that will be printed in the image. Enter the desired contents in the one or multiline text box. In the last case, set the alignment option and the space between lines in mm.



6.1.2 Variable field

Variable fields contain numeric or alphanumeric information. A **Field number** is used to identify the Variable field in the JDS7 editing window. The **Title** also appears on the handset to prompt the operator as to what type of information should be entered from the handset or PC keyboard as the image is selected for printing or loaded to the printer.

Printing the title is optional. If you choose to print the title it will appear as a preface to the variable information.



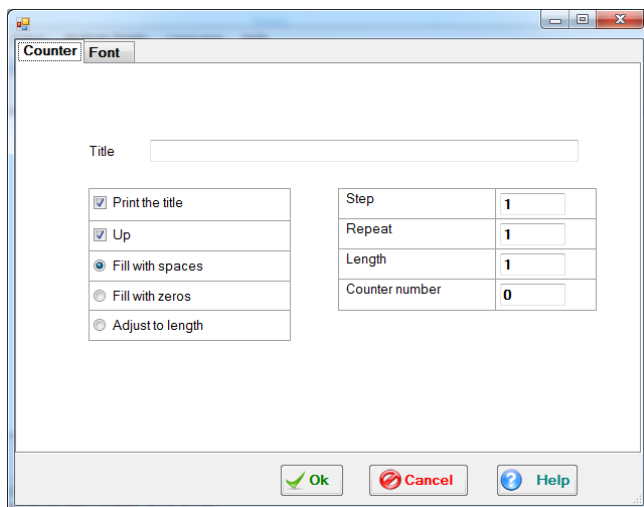
6.1.3 Multiple field

This is a combination of other existing fields. They are composed in the **Multiple Fields** section from the drop-down menu and assigned a number from 1 to 20. (see Chapter 7)

6.1.4 RS field

This field is designed to be filled with information received through the printer serial port. This allows “real time” information to be loaded to the image very quickly, allowing for very fast printing. The rest of the image is pre-mapped ahead of time and then only needs to process and prepare the variable data received through the RS channel. The parameters for this type of text are the **Position** in the string received and the **Length** of the data to be used. The data to be sent to the printer needs to be enclosed in brackets [information].

6.1.5 Counter



Step	1
Repeat	1
Length	1
Counter number	0

It is possible to print a number that increases or decreases with each print cycle. This is referred to as a **Counter**. You can use a maximum of 20 counters per label.

This is the **Counter** dialog box.

It is necessary to define a **Title** for the **Counter**. The printing of this **Title** is optional. This **Title** will be used to prompt the operator to enter an initial value for the **Counter**. This initial value is the starting number, from which all subsequent numbers will be increased or decreased. The initial value can be entered from the computer (PC keyboard) or the handset.

The **Length** box allows you to set the number of digits to print.

The value in the box labeled **Step** determines how much to increase (or decrease) the number. For instance, with an initial value of 0 and a **Step** value of 2, the printer will print 2, 4, 6, 8...

A number can be repeated for a series of labels. To print several labels with the same number, it is necessary enter a value in the box labeled

Repeat. For instance, with an initial value of 1 and a **Repeat** of 2 the printer will print 1,1,2,2,3,3,4,4...

The **Counter number** box is assigned by the user and is used in the multiple field configuration. And about the field formatting, there are options to fill the remaining length with zeros, spaces or adjust the number to the length.

6.1.6 Audit Code

This is an encrypted text field that reflects date and time of manufacturing and characters associated to the printer (customer ID, line ID and site ID). These characters are defined for each printer in the **Printer Setup** option described in Section 8.1

The Audit Code is composed of two lines of text, six characters on each line. When you choose audit code from the Text list, select number one or number two, program the general parameters (font type and rotation) and place it into the label.

6.1.7 Common variable

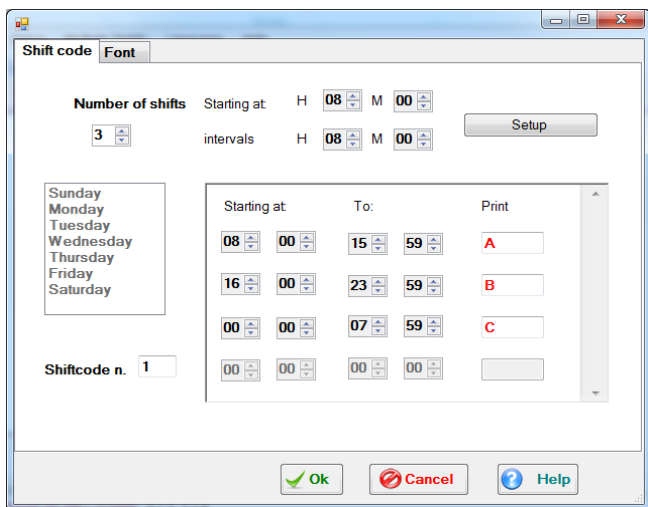
Common variable is information associated to a specific printer. This information is stored in the printer rather than in the image. Typical uses would be for a production line number or plant designator.

Using a Common variable field allows you to generate one image and send it to a variety of different printers and still produce printer specific images. Without the Common variable field it would be necessary to produce a separate image for each production line designation.

There can be as many as five Common variable fields in any image. These are designated **Common variable 1** through **Common variable 5**.

Enter the general parameters for this field (font type, rotation) and place the defined field into the label. See section 8.2 to learn how to define and send Common variable to a printer

6.1.8 Shift code



The dialog box is titled "Shift code" and has a "Font" tab. It contains the following fields:

- Number of shifts:** A dropdown menu set to "3".
- Starting at:** A time selection field set to "H 08 M 00".
- Intervals:** A time selection field set to "H 08 M 00".
- Setup button:** A button labeled "Setup".
- Days of the week:** A list box containing "Sunday", "Monday", "Tuesday", "Wednesday", "Thursday", "Friday", and "Saturday".
- Shiftcode n.:** A text box containing the number "1".
- Interval table:** A table with columns "Starting at", "To:", and "Print". It contains three rows:

Starting at	To:	Print
08 00	15 59	A
16 00	23 59	B
00 00	07 59	C
00 00	00 00	
- Buttons:** "Ok", "Cancel", and "Help" buttons at the bottom.

Fields defined as a **Shift code** or **Week shift code** print up to 4 characters associated with intervals of time defined by the user. In the example dialog box above, for a shift defined as 08:00 to 16:00 the printer will print the letter B during this time period, the letter C in the next time period, and so on. It is necessary to define the interval of time and characters to be printed

Begin by defining the **Number of shifts**, **Starting at**, and **intervals** values. Then, click the **Set up** button. The program will automatically set up the intervals.

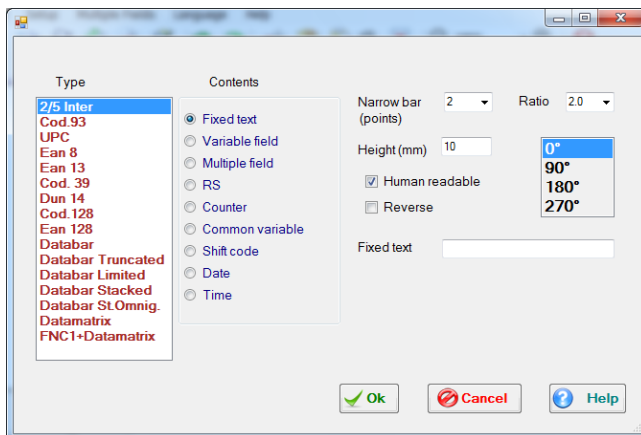
To add or edit the associated print string, double-click each interval and enter digits in the box marked **Print**. Follow the same process to define the **Week shift code** field for each day of the week.

For a **Shift code** the **Number of shifts**, **Starting at**, and **intervals** will only need to be set-up once. The listing for the days of the week will be inactive.

For both **Shift code** and **Week shift code** enter a number in the box labeled **Shift code number** to identify the field for use in a multiple field.

6.2 Barcode

Here is an example of the Bar Code dialog box.



The dialog box is titled "Barcode" and has a "Type" tab. It contains the following fields:

- Type:** A list box containing various barcode types: "2/5 Inter", "Cod.93", "UPC", "Ean 8", "Ean 13", "Cod. 39", "Dun 14", "Cod.128", "Ean 128", "Databar", "Databar Truncated", "Databar Limited", "Databar Stacked", "Databar St.Omnig.", "Datamatrix", and "FNC1+Datamatrix".
- Contents:** A group box containing radio buttons for "Fixed text", "Variable field", "Multiple field", "RS", "Counter", "Common variable", "Shift code", "Date", and "Time".
- Narrow bar (points):** A dropdown menu set to "2".
- Ratio:** A dropdown menu set to "2.0".
- Height (mm):** A text box set to "10".
- Human readable:** A checked checkbox.
- Reverse:** An unchecked checkbox.
- Fixed text:** A text box.
- Angle:** A dropdown menu set to "0°", with other options being "90°", "180°", and "270°".
- Buttons:** "Ok", "Cancel", and "Help" buttons at the bottom.

The user selects the type of barcode and what type of data is going to be in it. Content like variable field, multiple field, counter, common variable, shift code, date and time need an identification number in order to look for the content inside these pre-defined fields.

The following chart provides a list of number of digits and type of data allowed in each different code.

Code	Number of digits	Type of data
2/5 Inter	Variable	Numeric
Cod.93	Variable	Alphanumeric
UPC	11	Numeric
EAN8	7	Numeric
EAN13	12	Numeric
Cod.39	Variable	Alphanumeric
Dun14	13	Numeric
Cod.128	Variable	Alphanumeric
EAN 128	Variable	Alphanumeric
RSS14 (linear component)	13	Numeric
RSS14 (composite component)	26	Alphanumeric
Datamatrix	Variable	Alphanumeric

6.3 Graphic

Select a valid image in one of the standard types:

- BMP
- JPG
- GIF
- PNG

The printer resolution is 12 points by millimeter or 300 dpi.

Place your cursor at the point in the label where you wish the upper left hand corner of the graphic to be and click the left mouse button. If necessary, you can later move the graphic just like any other field or resize it as desired.

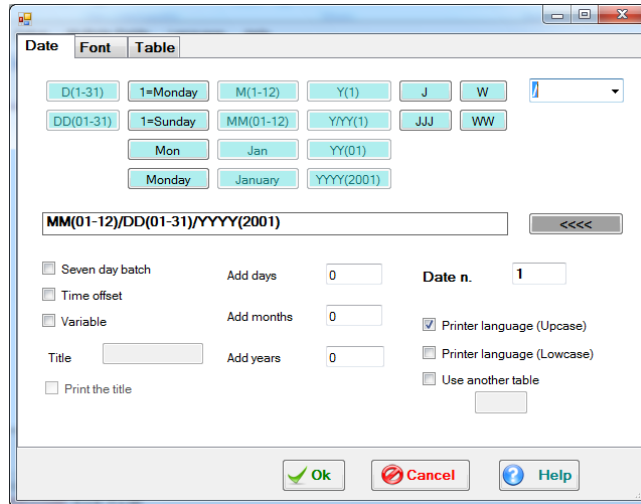
6.4 Line and Frame

Click the appropriate icon in the Toolbox and draw a line or a frame. The desired thickness could be changed by double-clicking the line or frame and entering the value in the corresponding dialog box.

Thickness is defined in printhead dots. 12 dots = 1 mm.

6.5 Date

Here is an example of the dialog box displayed when selecting the date field.



The data from each column is exclusive; it is not possible to print the month in both numbers and letters simultaneously. Choose only one. When selecting an option all other options are instantly disabled. Active options appear as black, inactive ones in gray.



This Undo button can be used to remove unwanted data from the date field. Simply click on it and the last item chosen will be removed. Multiple clicks will result in multiple items being removed.

Enter a number in the box labeled Date n. to identify the field for use in a multiple field or a barcode.

The **Seven day batch** and **Time offset** options are also exclusives and they have the following options:

Seven day batch: Using the **Seven day batch** option allows the printing of a single expiration date for an entire week. The day and hour that the expiration date changes is determined by the printer configuration. See **Printer setup** section 8.1.

Time offset: The printed time is modified according to the **Time offset** value entered in the **Printer setup**.

Variable: This date is entered from PC keyboard or from the handset, as is done with **Variable fields**. Like the **Variable field**, you can enter a title and choose whether or not to print it. This title is also used to prompt the operator to enter the date at the handset. The date, entered as DDMMYY on

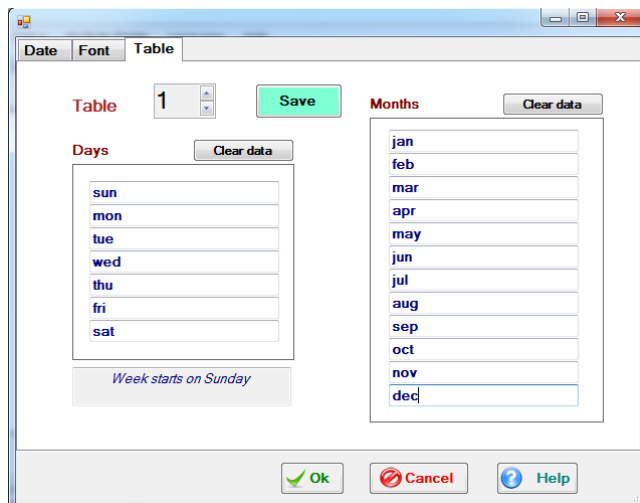
the handset or PC keyboard, will be printed in the format determined by the image design.

It is also possible to add years, months, or days to the date according to the values entered in the corresponding boxes except when using a **Variable** date.

Select from the **Separator** box the character used to separate the **Month**, **Day** and **Year** in the **Date field**. Possible separators are: {none}, {space}, - (dash), : (colon), / (slash), and . (dot).

By default, when printing months or days of the week in text form, the printer will use an alphabetic table. Selecting **Printer language (Uppcase)** or **Printer language (Lowcase)** will provide upper or lower case text. Choosing **Mon** or **Monday** will determine if the full text or an abbreviation will be used.

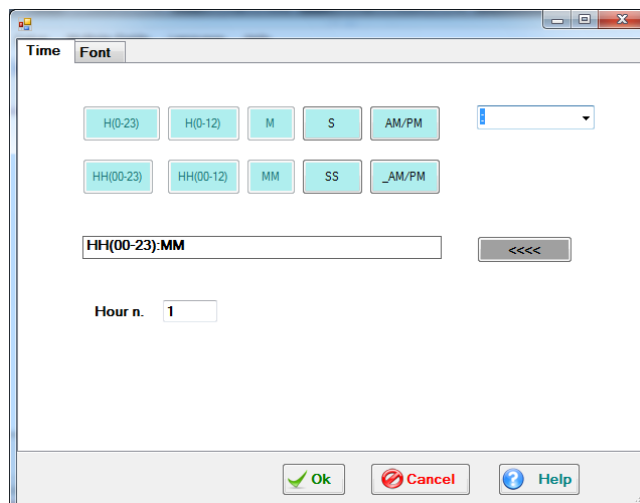
If you want to represent the days or months with another value it is possible to create and use one of up to 10 tables created by the user in the JDS7 program. Select table number and create or edit the string table of the months and days according to the following graphic:



Tables will be loaded to the printer when the label that uses them is loaded.

6.6 Time

This is the Time field options dialog box:



All the fields in the **Hour**, **Minute** and **Second** columns are exclusive - you can only use each option once in a given field. Active options appear as black, inactive ones in gray.



This Undo button can be used to remove unwanted data from the time field. Simply click on the Undo button and the last item chosen will be removed. Multiple clicks will result in multiple items being removed.

Enter a number in the box labeled Hour n. to identify the field.

7 Multiple fields

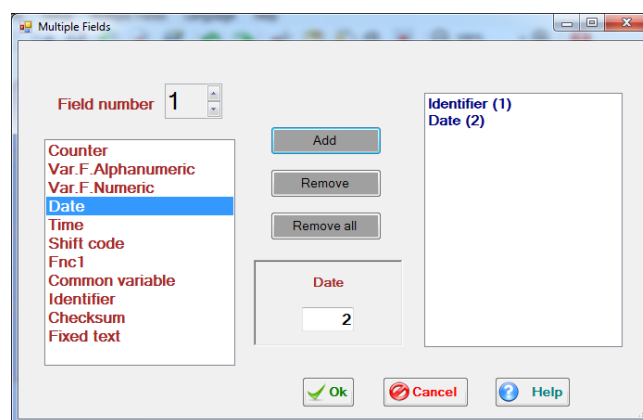
The Multiple Field allows the user to compose a single set of data from a combination of other fields. Go to the menu bar to locate this option.

The fields that will be contained in the Multiple field must be created before a Multiple field can be composed.

Note that the Multiple field itself is not used to print data. Rather, it is used to compile information from other fields that can be printed as a single field (Either as Text or a Barcode)

It is possible to create up to 20 multiple fields.

The following dialog box shows an example of a multiple field composition:



The first step is to select the Multiple Field number to edit or create by using the forward-backward buttons. If the selected field was previously created, then the Composition box displays the existing combination of fields.

The Selection box provides a list of available fields. Most of the available fields require that you supply an identifying number or information from the source field.

Listed here are the specific requirements for some fields:

Fnc1 (Function 1) is used as the first character in printing some barcodes. There are no options associated with this field.

Common variable: select number from 1 to 5

Identifier: select a number that will appear between brackets in the composition.

Checksum: will print a checksum from the beginning of data or from the last identifier if used.

Fixed text: you can type in fixed text to be included in the multiple field composition.

After you select a field and enter the necessary information, click on the **Add** button to place it in the Composition list. The final printed data will appear from left to right starting with the information at the top of the list.

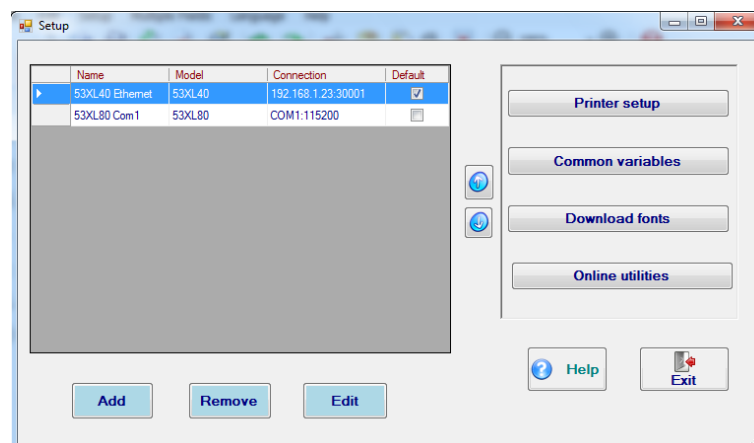
To eliminate a field from the Composition, select the field and press the **Remove** button. Also **Remove All** is allowed.

8 Setup

Select **Setup** from the drop down menu bar.

This option is used to configure printers and the computer connection to them. It is also used to set and load Printer Setup parameters, edit Common Variables, Download fonts or enter the Online utilities option.

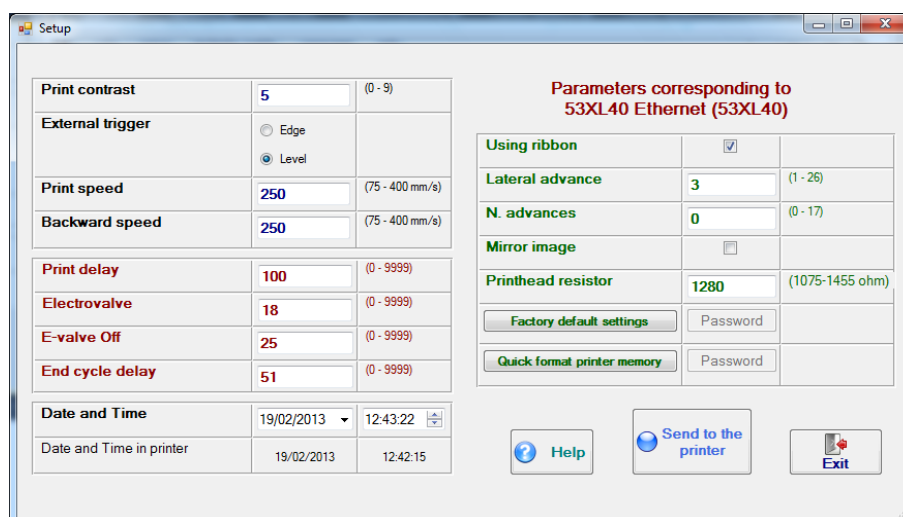
Here is an example of the **Setup** dialog box:



The printer connection to the computer is explained in Chapter 3

8.1 Printer Setup

A typical intermittent printer configuration is indicated in the following graphic:



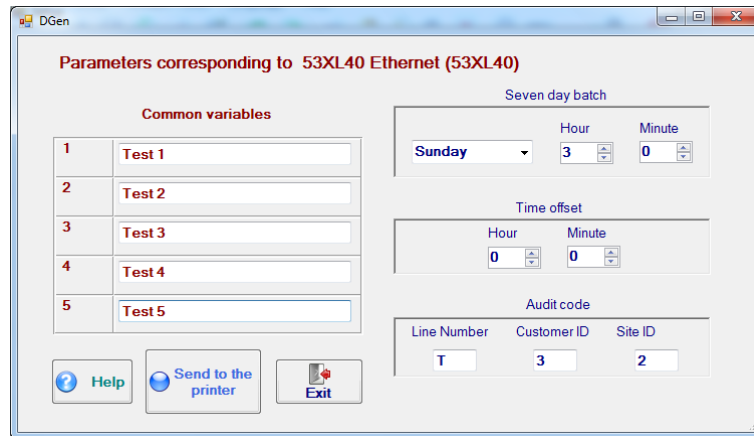
The parameters above can also be modified with the PR5 or iView handsets. For more detail please refer to the printer User's Guide supplied with your printer.

The numeric parameters appear with their corresponding value range in brackets.

The **Send to the Printer** button transfers the parameters entered in the dialog box, through the associated port, to the printer.

8.2 Common variables and other printer parameters

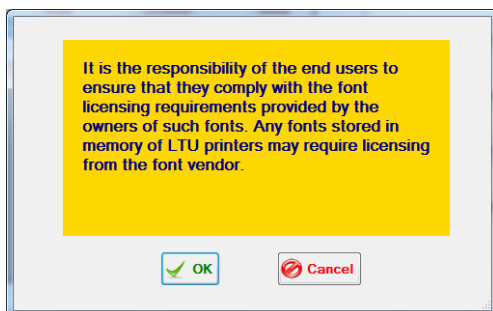
This is the dialog box corresponding to Common variables, described in section 6.1.7



This dialog allow changing options for the Seven day batch and Time offset explained in section 6.5 and Audit code explained in section 6.1.6

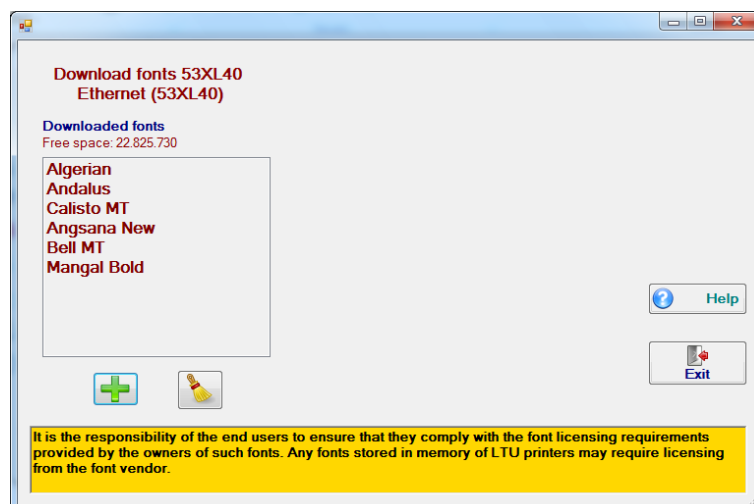
8.3 Download fonts

This option allow download True Type fonts to the printer up to 23,5 Mb or 12 fonts.




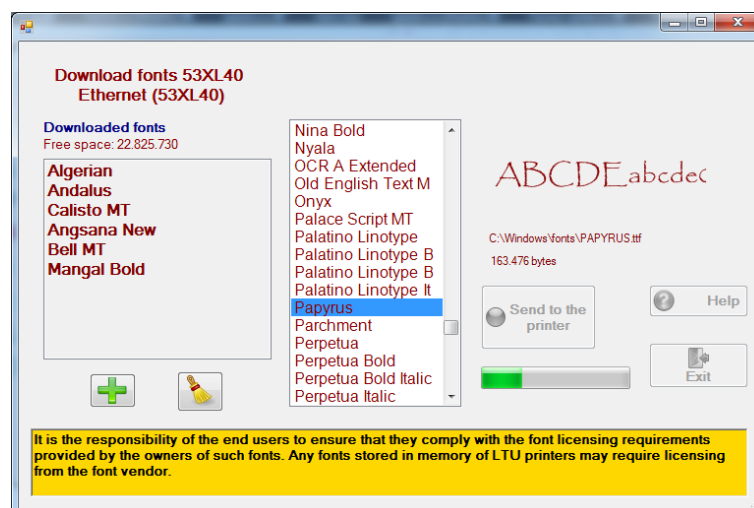
Notice the disclaimer window and go ahead.


JDS7 gets the list of downloaded fonts into the printer and display this window:



Note that you can see how much fonts are currently in the printer memory and how much free space is available to download extra fonts.

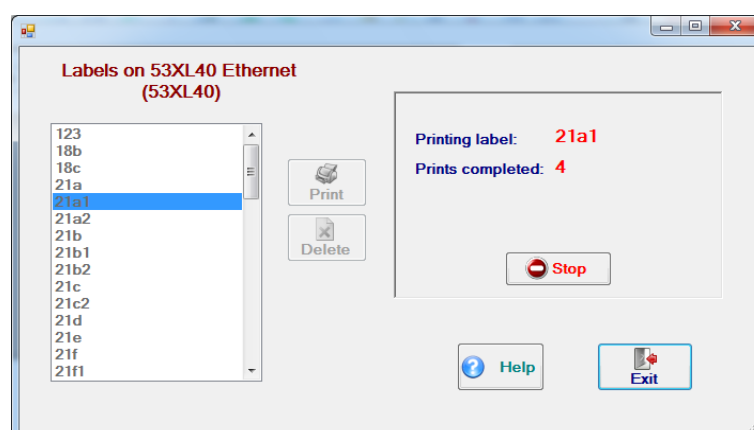
The option using sign  allows you to select the font to download from the computer's system fonts folder.



The option using sign  allows you to delete all fonts. This is a time consuming procedure, please follow instructions on the screen.

8.4 Online Utilities

The Online utilities button allows you to view a list of images stored in the printer while in the stopped mode. Additionally, images can be deleted from this option.



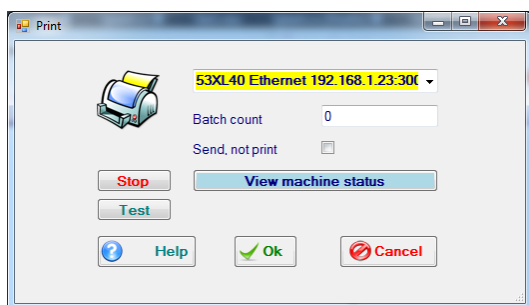
9 Print

This section is about sending the labels you have created in the JDS7 program to your printer. Note that you must have previously configured a connection to it in Printer Setup.



Begin by opening the label you wish to send to the printer and then select File>Print or the corresponding icon in the Menu. The type of dialog box displayed depends on the fields selected when designing the label.

Printing a label without variable fields



Note that you can choose the printer that is going to receive the label although the dialog shows the default one as the first choice. You may want to keep the label into the printer memory and not print. Check the Send, not print option for this purpose.

Printing a label with variable fields

You are prompted to fill in the variable fields, counter or variable data content.

In both cases, a Stop order is sent before sending the label. The machine status is always available through the button View machine status and only in case of IDLE status, the label is sent to the printer.

